

SCR210



- temperature range $-10 \div 300^{\circ}\text{C}$ (depending on the cable used)
- various magnetic surfaces
- thermowell spring protection against excessive cable bending

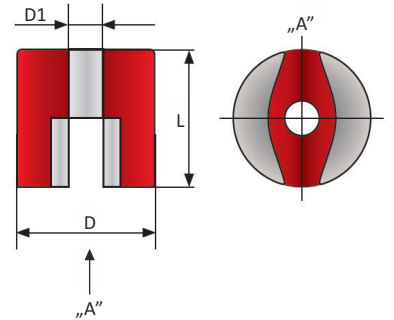
Resistance thermometers **SCR210** are suitable for temperature measurement on the ferrous surface up to a maximum of 450°C . SCR210 sensor consists of thermometric resistor, magnetic surface, and connection cable.

Application areas:

- temperature measurement of ferrous material,
- general industrial services.

CONNECTION CABLES

Diagram	Insulation design	Temperature range	Code
	- double fiberglass - stainless steel - cond: nickel plated copper	$-50 \div 400^{\circ}\text{C}$	WS
	- PVC - cond: nickel plated copper	105°C max.	PVC
	- teflon - stainless steel - teflon - cond: nickel plated copper	260°C max.	TOT
	- teflon - stainless steel - cond: nickel plated copper	260°C max.	TO
	- silicon - stainless steel - silicon - cond: nickel plated copper	180°C max.	SOS
	- silicon - silicon - cond: nickel plated copper	250°C max.	SS
	- teflon - teflon - cond: nickel plated copper	260°C max.	TT



ORDERING

SCR210-X-X-X-X-X-X

temperature sensor:

- 1 : single
- 2 : double

sensing element:

- Pt 100
- Pt 500
- Pt 1000
- other, please specify

magnetic surface (with table):

- M1
- M2
- M3
- M4

measuring circuit:

- 2 : 2-wire
- 3 : 3-wire
- 4 : 4-wire

accuracy class:

- A
- B
- 1/3B

connection cable length:

- 1500 : 1,5 linear meter
- other, please specify [mm]

insulation types of connection cable:

- T : single cond teflon (260°C max.)
- WS1 : single cond fiberglass (400°C max.)
- other, please specify

MAGNETIC SURFACE

Magnetic surface	Diameter D	Diameter D1	Length L	Adhesion force
M1	$\varnothing 13 \text{ mm}$	$\varnothing 4,2 \text{ mm}$	10 mm	7 [N]
M2	$\varnothing 19 \text{ mm}$	$\varnothing 5,4 \text{ mm}$	13 mm	19 [N]
M3	$\varnothing 25 \text{ mm}$	$\varnothing 5,4 \text{ mm}$	16 mm	29 [N]
M4	$\varnothing 32 \text{ mm}$	$\varnothing 7 \text{ mm}$	25 mm	66 [N]

Ordering example:

SCR210-1-Pt100-M1-T-1500-B-2

Single RTD temperature sensor, 1xPt100, B tolerance class, 2-wire measuring circuit, magnet type M1, single conductors in teflon insulation, connection cable length 1500 mm

