

Quick Guide PC SOFTWARE MultiCon Emulator

- Version: **v.1.0.0** or higher
- Designed for MultiCon data recorders



Read the user manual carefully before starting to use the software.
Producer reserves the right to implement changes without prior notice.

CONTENTS

1. INTRODUCTION.....	3
1.1. LIMITATIONS OF THE MULTICON EMULATOR PROGRAM.....	3
1.2. HARDWARE REQUIREMENTS.....	3
2. RUNNING 'MULTICON EMULATOR'.....	3
2.1. QEMU HOT KEY USED IN THE 'MULTICON EMULATOR'.....	3
2.2. ADDITIONAL OPTION 'REMOTE FLASH DISK' IN THE 'MULTICON EMULATOR'.....	3
2.2.1. Example of creating remote disk in Windows 7.....	4
2.3. ACCESS TO THE 'MULTICON EMULATOR WEB PAGE'.....	5
2.4. WORKING WITH THE 'DAQ MANAGER' SOFTWARE.....	6

1. INTRODUCTION

MultiCon Emulator is a computer program that allows to emulate the MultiCon device in demo version at Windows system. This demo enables the user handling the interface like in the real unit.

1.1. LIMITATIONS OF THE MULTICON EMULATOR PROGRAM

Limitations of the **MultiCon Emulator** compared with the real device:

- no input and output modules,
- has built-in the ETU module to handle ethernet,
- has built-in inactive serial port to serve Modbus interface options (connection to a real serial network is disabled),
- in **Device information** menu unavailable options:
 - add new licence (data logging licence is already activated),
 - firmware update,
 - remote display,
 - export manual.

1.2. HARDWARE REQUIREMENTS

- operating system: Windows 7,
- 1 GHz processor or faster,
- recommended 2 GB of RAM memory,
- 1 GB free space on a hard drive,

2. RUNNING 'MULTICON EMULATOR'

Double clicking or running the file **run.bat** will start the **MultiCon Emulator** using virtual machine QEMU. The demo is running about 1 minute depending on your computer.

2.1. QEMU HOT KEY USED IN THE 'MULTICON EMULATOR'

- 'Ctrl' + 'Alt' – allows the user to move from window of the virtual machine QEMU to Windows window,
- 'Esc' – shutdown the virtual machine QEMU (QEMU can be also shutdown using 'Close' button in the upper right corner of the virtual machine or by 'MENU' of the 'MultiCon Emulator' program using 'Safe shutdown' button.

2.2. ADDITIONAL OPTION 'REMOTE FLASH DISK' IN THE 'MULTICON EMULATOR'

In the emulator there is an additional option **Remote flash disk** available in **Network settings** submenu enabling to save/load configuration and template or export log data to shared folder in Windows system. Shared folder can be in any medium. If configuration/log is to be saved, the medium must be accessed to write. If option **Remote flash disk** in **Network settings** menu is disabled than save/load configuration and template or export log data is limited to 68MB free space memory of the emulator.

To use selected folder as 'Remote flash disk' for save/load "Multicon Emulator" files:

1. Create new folder and name it **flashdisk** in any place on your computer.
2. Share **flashdisk** folder for selected user.
3. In the **Network settings** of the **Multicon Emulator** configuration menu, enter user name and password defined in step 2. If you choose an user account with owner sharing or create a new user than a password is required. If you choose user account 'All' or "Guest" a password is not required.

Save/load configuration/log is available in **Files management** menu. In the **Load configuration** submenu there are additional 2 configurations (only if **Remote flash disk** option is disabled):

- default.cfg – empty configuration (inactive logical channels),
- demo.cfg – demo configuration,

2.2.1. Example of creating remote disk in Windows 7

1. Create a new folder on your computer and name it **flashdisk** (see Fig. 2.1),
2. By clicking right mouse button on this folder, run context menu and choose **Properties** option,
3. In **Properties** window select **Sharing** tab,
4. Click on the **Advanced Sharing** button,
5. In **Advanced Sharing** window select **Share this folder** option,
6. Click the **Permissions** button,
7. In **Permissions** window select user or users group which will have access to **flashdisk** folder,
8. In **Permissions** window select **Full Control** option,
9. Accept all changes,
10. In MultiCon Emulator window select: **Menu** → **Device configuration** → **Network settings**,
11. Write user name and password for user selected in section 7 and accept configuration. If in section 7 users group is selected, it is necessarily to write name and password for one user of the group. **Access to remote folder is available only for accounts protected by password.**



The user name in **Windows 7** can be checked by running **msinfo32.exe** command in the search box in **Start** menu or in quick search window by using **Windows + R** hotkey.

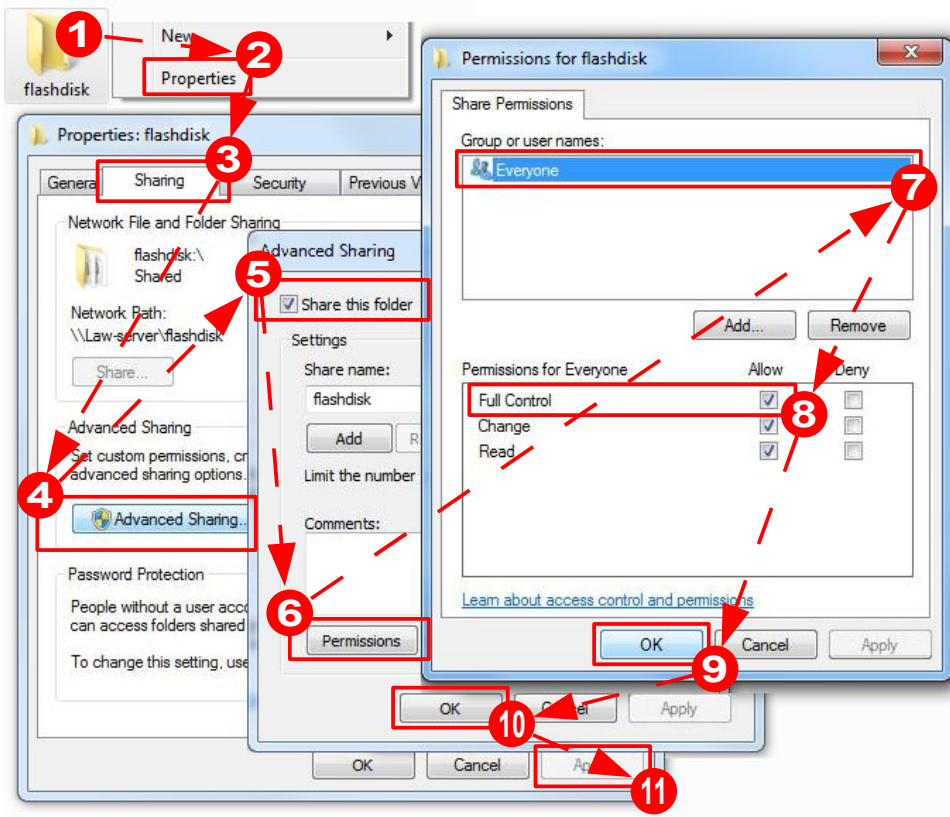


Fig. 2.1. Example of creating remote drive in Windows 7

2.3. ACCESS TO THE 'MULTICON EMULATOR WEB PAGE

To access the web page of the running **MultiCon Emulator**, type **localhost:5555** in the address bar of your favourite web browser (see Fig. 2.2).

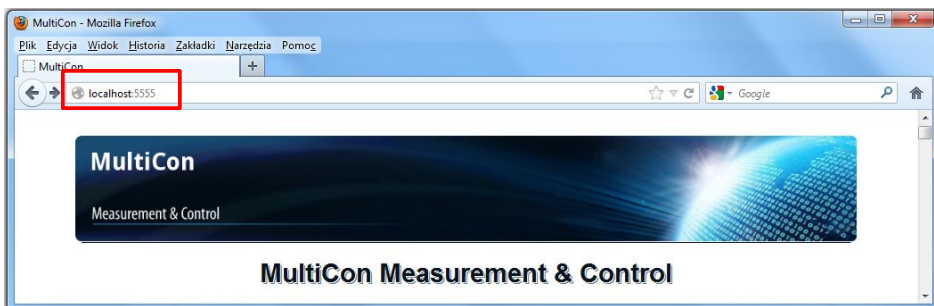


Fig. 2.2. Web address settings for the 'MultiCon Emulator' in web browser.



Graphic view of logical channels will be available after installing **Java Runtime Environment** ver 6 and **Java(TM) Platform SE6** plug-in for web browser.

2.4. WORKING WITH THE 'DAQ MANAGER' SOFTWARE

To use **MultiCon Emulator** with the **DAQ Manager** software the user should in the **DAQ Manager** software in option **Ethernet capabilities** set port: 5555 rather than 80 and select the option **Host name / Domain** with name: **localhost** (see Fig. 2.3 and Fig. 2.4).

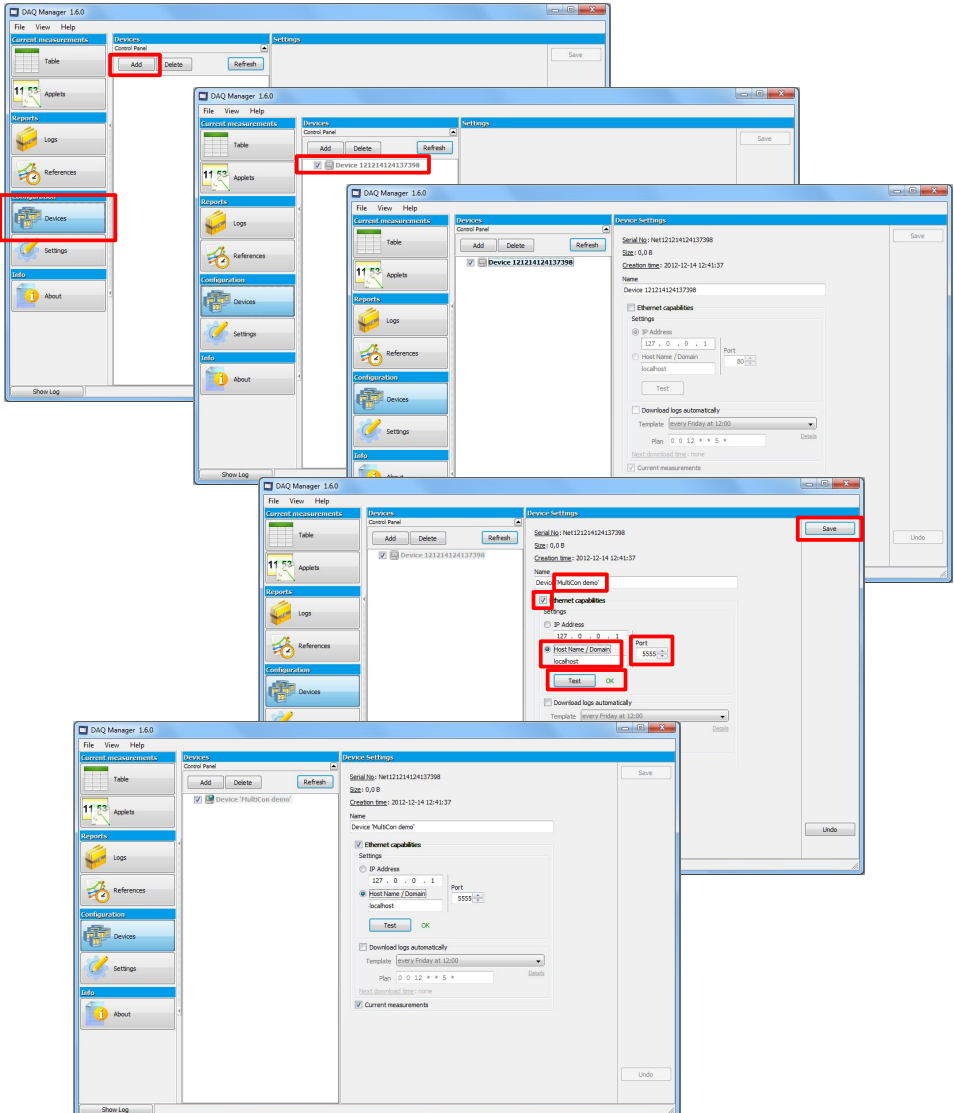


Fig. 2.3. DAQ Manager software Ethernet setting for MultiCon Emulator

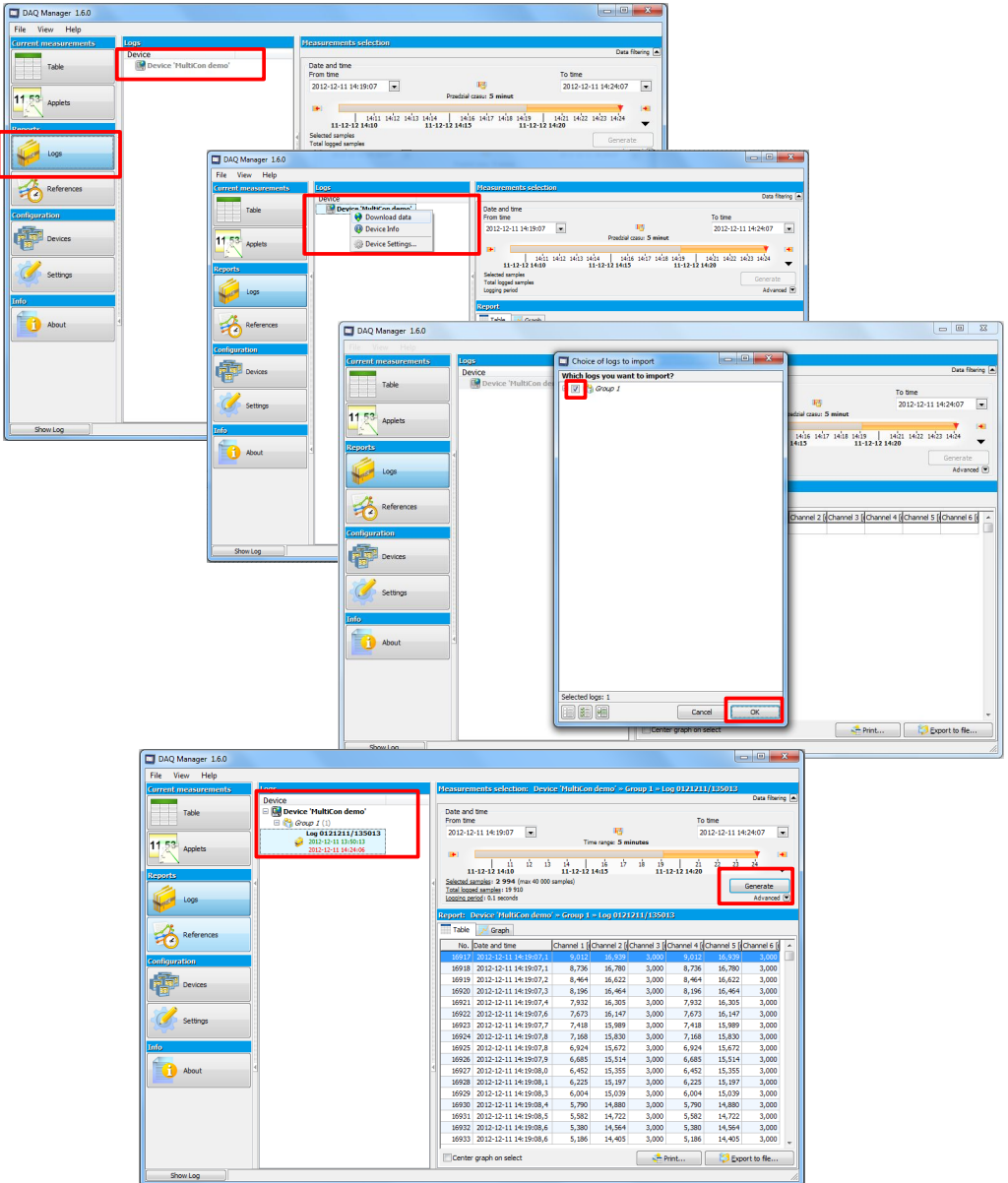
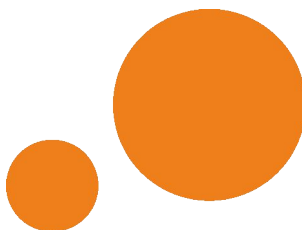


Fig. 2.4. DAQ Manager software setting for new Log from MultiCon Emulator



**SIMEX Sp. z o.o.
ul. Wielopole 7
80-556 Gdańsk
Poland**

**tel.: (+48 58) 762-07-77
fax: (+48 58) 762-07-70**

**<http://www.simex.pl>
e-mail: info@simex.pl**