



Band heaters

- power supply: from 220V to 3x400V
- heater diameters: from 25 to 1500 mm
- micanite or ceramic insulated design
- additional adiabatic sheath
- possibility to use inner J, K, T thermocouple
- sheath: carbon steel, brass, Cr-Ni steel
- termination type: cable, block, screw

Band heaters are designed with micanite or ceramic insulation sheathed with brass or stainless steel plate. Ceramic band heaters are characterised by the excellent insulation properties and the long-lasting period of operation.

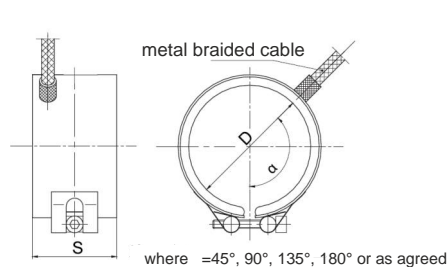
Application:

- industrial pipes,
- nozzles,
- film blowing machines,
- packing machines, injection moulding machine, extruders.

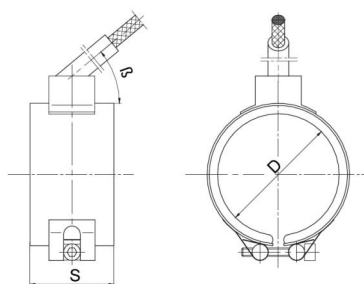
TECHNICAL DATA

Parameters	GM	GC
Isolation	micanite	ceramic
Heater diameter	25 ÷ 1000 mm	50 ÷ 1500 mm
Width	25 ÷ 1000 mm	40 ÷ 1000 mm
Thickness	3,5 ÷ 4 mm	12 ÷ 32 mm
Supply voltage	24V, 48V, 220V, 230V, 380V, 3x380V, 400V, 3x400V, other	
Surface loading	4,5 W/cm ²	7 W/cm ²
Housing material	Cr-Ni steel (AISI 321), brass	Cr-Ni steel (AISI 321)
Operating temperature	max. 450°C, allowable 500°C during good heat dissipation	max. 550°C, allowable 600°C during good heat dissipation

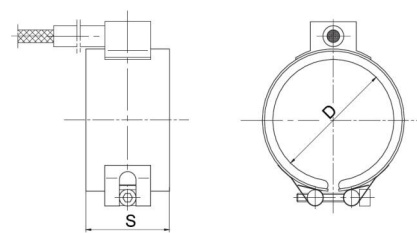
TERMINATION TYPES



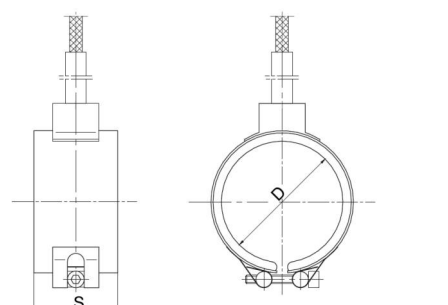
A type: directly from the heater in overbraid



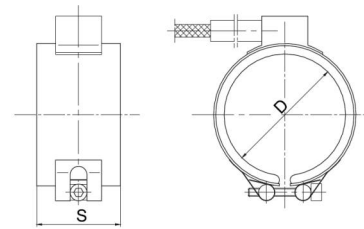
B type: axial (angle 3...70°)



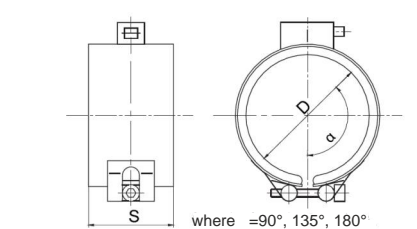
C type: axial flat



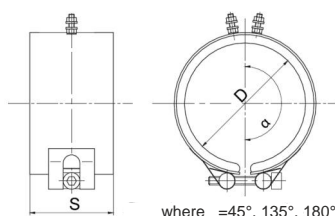
D type: radial



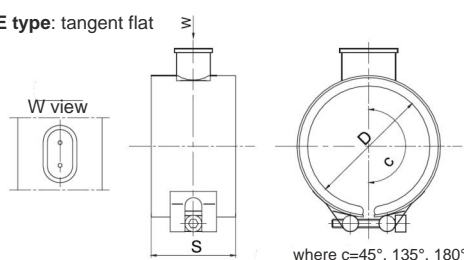
E type: tangent flat



F type: with block



G type: screw: M5



H type: plug